

**EDIFICA COLOMBIA LTDA RECENT EXPERIENCE**

No	Country	Final Objectives (Type of Facilities)	Project Name	Scope of Work	Period (Month/Year)		Contract Amount (USD Mil.)	Type of Contract	Type of Project	Client (Main Contractor)	Project Owner (End User)	Status
					from	to						
1	Colombia	Environment Facilities	Mooring Buoys CONTECAR	Civil Engineering Consulting for complete design of mooring buoys in CONTECAR - Cartagena - Colombia.	jul-16	sep-16	15000	Main Contractor	Private	CONTECAR	CONTECAR	Completed
2	Colombia	Environment Facilities	Mooring Buoys SPRC	Civil Engineering Consulting for complete design of mooring buoys for the Cruise Terminal Pier 3 Cartagena in Cartagena - Colombia.	oct-16	dic-16	15000	Main Contractor	Private	Sociedad Portuaria Regional de Cartagena S.A.S.	Sociedad Portuaria Regional de Cartagena S.A.S.	Completed
3	Colombia	Oil & Gas Facilities	Puerto Solo Project	LNG, LPG, petroleum and derived products storage and transfer, power plant, containers, general cargo. Infrastructure planning and Layout. Foundation preliminary design. Geotechnical, structural and environmental consulting recommendations.	feb-16	sep-16	500000	Main Contractor	Private	PIO S.A.S.	PIO S.A.S.	Completed
4	Colombia	Oil & Gas Facilities	Puerto Antioquia Project.	Container and General Cargo Port. Infrastructure Planning. Specialized geotechnical In situ test Foundation preliminary design. Structural preliminary design. Aerial survey. EPC Contractor Selection Support.	feb-16	nov-19	1500000	Main Contractor	Private	COTEMA	PIO S.A.S.	Completed
5	Colombia	Commercial Building	Liquid port terminal: SPLA Santa Marta	800 m long structure and 3 platforms. Port Planning. Geotechnical recommendations. Foundation design. Aerial and Bathymetric Survey	jun-17	mar-18	300000	Main Contractor	Private	Las Americas - Graneles Líquidos	Las Americas - Graneles Líquidos	Completed
6	Colombia	Thermal Power Plant	Wind Farm Guajira I	Geotechnical and Geological survey for the final structural design and construction of a wind farm of 8 km large, 1 substation, 16 aerogenerators, and an adjacent road. Foundation design. Geotechnical recommendations. Infrastructure planning. Aerial survey	jun-18	mar-19	450000	Main Contractor	Private	ISAGEM	ISAGEM	Completed
7	Colombia	Oil & Gas Facilities	Ethylene plant II	Compaction Grouting Rehabilitation Project. Barrancabermeja Refinery. Ethylene Plant. Supervision of rehabilitation works. Design solutions. Instrumentation.	sep-18	feb-20	7000000	Sub Contractor	Public	Botero Ingenieros	ECOPETROL	Completed
8	Colombia	Commercial Building	CONTECAR Consultancy	Soil improvement design. Structural Design. FEM analysis Foundation design. Geotechnical recommendations. Infrastructure planning.	ene-19	nov-19	57000	Main Contractor	Private	CONTECAR	CONTECAR	Ongoing
9	Colombia	Commercial Building	Puerto de Cartagena Project	Soil improvement design. Structural Design. FEM analysis Foundation design. Geotechnical recommendations. Infrastructure planning.	ene-10	nov-19	75000	Main Contractor	Private	Sociedad Portuaria Regional de Cartagena S.A.S.	Sociedad Portuaria Regional de Cartagena S.A.S.	Ongoing



No	Country	Final Objectives (Type of Facilities)	Project Name	Scope of Work	Period (Month/Year)		Contract Amount (USD Mil.)	Type of Contract	Type of Project	Client (Main Contractor)	Project Owner (End User)	Status
					from	to						
10	Colombia	Commercial Building	LEAP Project.	Geotechnical and Geological survey for the final structural design and of a paper milling plant. Foundation design. Geotechnical recommendations. Infrastructure planning. Specialized geotechnical In situ testing.	jun-19	mar-20	450000	Main Contractor	Private	Smurfit Kappa	Smurfit Kappa	Completed
11	Colombia	Oil & Gas Facilities	SPIA Aguadulce port	Port of Aguadulce. General Cargo and Container facilities. Infrastructure planning. Foundation design. Geotechnical recommendations.	ene-15	feb-18	1300000	Main Contractor	Private	Sociedad Puerto Industrial Agua Dulce	Sociedad Puerto Industrial Agua Dulce	Completed
12	Colombia	Commercial Building	Universidad distrital Sede Bosa	Project manangement	feb-15	mar-18	2500000	Main Contractor	Public	City of Bogotá	City of Bogotá	Completed
13	Colombia	Commercial Building	Puerto Nuevo	Geotechnical and Geological survey for the final structural design and construction of Puerto Nuevo port. Foundation design. Geotechnical recommendations. Infrastructure planning.	may-16	jul-18	1200000	Main Contractor	Public	Sociedad Portuaria Puerto Nuevo SA	Sociedad Portuaria Puerto Nuevo SA	Completed
14	Colombia	Oil & Gas Facilities	El Cayao Port LNG	Geotechnical and Geological survey for the final structural design and construction.	ene-15	dic-15	1500000	Main Contractor	Public	PROMIGAS	PROMIGAS	Completed
15	Colombia	Environment Facilities	Waste water treatment plant - Canoas.	Geotechnical and Geological survey for the final structural design and construction for the projected wastewater treatment plant in Bogotá river. Preliminary Foundation design. Geotechnical recommendations	ene-16	may-16	800000	Main Contractor	Private	CDM Smith	City of Bogotá	Completed
16	Colombia	Oil & Gas Facilities	Puerto Solo Project - LNG-LPG	Project Manangement: LNG, LPG, petroleum and derived products storage and transfer, power plant, containers, general cargo.	jul-20	-	1800000	Main Contractor	Private	SPRC	SPRC	Ongoing



**EDIFICA USA LLC**, Los Angeles, CA  
**EDIFICA COLOMBIA LTDA**, Bogota, Colombia

**EDIFICA**

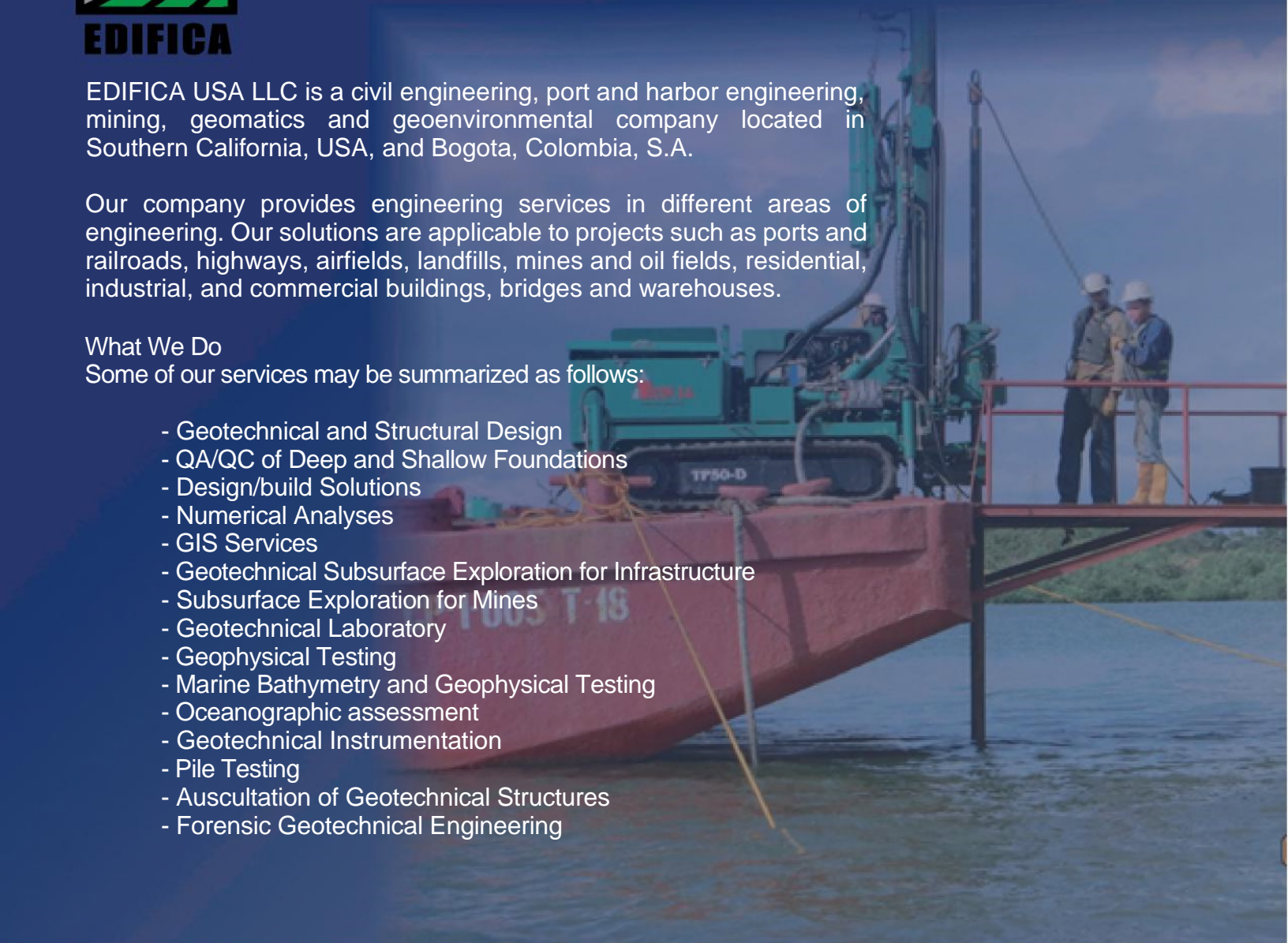
EDIFICA USA LLC is a civil engineering, port and harbor engineering, mining, geomatics and geoenvironmental company located in Southern California, USA, and Bogota, Colombia, S.A.

Our company provides engineering services in different areas of engineering. Our solutions are applicable to projects such as ports and railroads, highways, airfields, landfills, mines and oil fields, residential, industrial, and commercial buildings, bridges and warehouses.

**What We Do**

Some of our services may be summarized as follows:

- Geotechnical and Structural Design
- QA/QC of Deep and Shallow Foundations
- Design/build Solutions
- Numerical Analyses
- GIS Services
- Geotechnical Subsurface Exploration for Infrastructure
- Subsurface Exploration for Mines
- Geotechnical Laboratory
- Geophysical Testing
- Marine Bathymetry and Geophysical Testing
- Oceanographic assessment
- Geotechnical Instrumentation
- Pile Testing
- Auscultation of Geotechnical Structures
- Forensic Geotechnical Engineering



**EDIFICA USA LLC**

10 Tumbleweed St  
 Rancho Santa Margarita, CA 92679  
 ph: 909 3428301  
 alt: 909 3428300

**EDIFICA COLOMBIA LTDA,**

Carrera 49A No. 94-76 Of. 602, Bogota  
 ph: 57 15086013, 57 12362121  
[info@edificausa.com](mailto:info@edificausa.com)



EDIFICA USA LLC, Los Angeles, CA  
EDIFICA COLOMBIA LTDA, Bogota, Colombia

## SERVICES



Our company provides engineering services in different geo-areas like deep and shallow foundations, slopes, retaining walls, underground excavations, embankments, pipelines, ground modification, pavements, landfills, and geotechnical earthquake engineering.

### ***Geotechnical and Structural Design***

We perform geotechnical and structural design for deep and shallow foundations, retaining walls, excavations, underground structures, dams, highways, railways, bridges, ports and offshore structures, airports, underpinning of existing structures. We apply state-of-the-art geotechnical design methodologies in our projects to obtain stable and economical geotechnical structures.

### ***QA/QC for Deep Foundations***

EDIFICA USA LLC provides QA/QC services for displacement and non-displacement piles to determine pile integrity and/or pile capacity. The methods applied comprise static pile load tests, dynamic pile load tests (PDA, Statnamic), pile integrity (sound wave propagation, cross hole sonic logging, thermal integrity, Smartpile), mini-camera visual inspection, vibration and noise monitoring.

### ***Design/build Solutions***

EDIFICA USA LLC provides geotechnical design/build services through which our clients obtain low-cost and time efficient solutions for foundations and slope stability problems.



### **EDIFICA USA LLC**

10 Tumbleweed St  
Rancho Santa Margarita, CA 92679  
ph: 909 3428301  
alt: 909 3428300

### **EDIFICA COLOMBIA LTDA,**

Carrera 49A No. 94-76 Of. 602, Bogota  
ph: 57 15086013, 57 12362121  
[info@edificausa.com](mailto:info@edificausa.com)



EDIFICA USA LLC, Los Angeles, CA  
EDIFICA COLOMBIA LTDA, Bogota, Colombia

## SERVICES

### ***Numerical Analyses***

EDIFICA USA LLC provides consulting services using numerical tools for geotechnical analyses.

These numerical tools are based on the Finite Elements Method (FEM), Finite Difference Method (FDM) and Discrete Element Method (DEM).

Our analyses are time and cost efficient in favor of the clients' project needs. Contact us by e-mail or give us a call and one of our engineers will discuss with you the alternatives we can analyze on your project.

### ***GIS Services***

EDIFICA USA LLC provides services based on Geographic Informations Systems applied to the following geotechnical engineering branches:

- Geology maps.
- Soils maps.
- Geo-hazard analysis.
- Landform analysis.
- Characterization and zonation of linear projects.

### ***Geo-Explorer Team***

GEO-EXPLORER Team provides drilling, soil and rock continuous coring, CPT, DMT, Pressuremeter, testing services for subsurface exploration of soils and rocks for onshore and offshore projects.

### ***Bathymetry, Oceanographic, Geophysical Testing***

EDIFICA USA LLC provides services of geophysical auscultation of the ground, detection of cavities and cracks, dimensioning of existing foundations and pile cross sonic logging.

### ***Instrumentation and Monitoring***

EDIFICA USA LLC provides services of instrumentation and monitoring of geotechnical structures. Measurements include movements, deformations, tilting, stresses and vibrations. Specialized equipment is used for single readings or data logging. The data is captured through conventional (wired) or wireless transmission systems. Some instruments include: Settlement plates, Load cells, Piezometers and Tiltmeters.



Statnamic load test to 1400 Tons



### EDIFICA USA LLC

10 Tumbleweed St  
Rancho Santa Margarita, CA 92679  
ph: 909 3428301  
alt: 909 3428300

### EDIFICA COLOMBIA LTDA,

Carrera 49A No. 94-76 Of. 602, Bogota  
ph: 57 15086013, 57 12362121  
[info@edificausa.com](mailto:info@edificausa.com)



EDIFICA USA LLC, Los Angeles, CA

EDIFICA COLOMBIA LTDA, Bogota, Colombia

## ABOUT US

Our company provides engineering services in different geo-areas like deep and shallow foundations, slopes, retaining walls, underground excavations, embankments, ground modification, pavements, and geotechnical earthquake engineering.

Our solutions are applicable to different projects as residential, industrial, and commercial buildings, ports and harbours, highways and airfields.

## *Our Personnel*

Our team of geotechnical engineers, geologists, structural enginers, land surveyors, and technicians is the most valuable asset of the company. We are proud of our sound team composition. We combine the high education level and the vast experience of our employees with their high degree of commitment for client satisfaction.

## *Our Business*

EDIFICA USA LLC and EDIFICA COLOMBIA LTDA were established in 2006 and 1998 respectively. We have provided services to clients located in the West Coast and South America. We are distinguished within the industry because we provide solutions utilizing state-of-the-art geotechnical engineering technologies.



Aguadulce Port - Buenaventura (Colombia)

### EDIFICA USA LLC

10 Tumbleweed St  
Rancho Santa Margarita, CA 92679  
ph: 909 3428301  
alt: 909 3428300

### EDIFICA COLOMBIA LTDA,

Carrera 49A No. 94-76 Of. 602, Bogota  
ph: 57 15086013, 57 12362121  
[info@edificausa.com](mailto:info@edificausa.com)



EDIFICA USA LLC, Los Angeles, CA  
EDIFICA COLOMBIA LTDA, Bogota, Colombia

## INSITU TEST EQUIPMENT



**CPTu Seismic**



**MENARD  
PRESUROMETER**



**DMT  
FLAT DILATOMETER**

**EDIFICA USA LLC**

10 Tumbleweed St  
Rancho Santa Margarita, CA 92679  
ph: 909 3428301  
alt: 909 3428300

**EDIFICA COLOMBIA LTDA,**

Carrera 49A No. 94-76 Of. 602, Bogota  
ph: 57 15086013, 57 12362121  
[info@edificausa.com](mailto:info@edificausa.com)



EDIFICA USA LLC, Los Angeles, CA  
 EDIFICA COLOMBIA LTDA, Bogota, Colombia

# DON RODRIGO

## HEAVE COMPENSATED DRILLING RIG SHIP FOR OFFSHORE GEOTECHNICAL INVESTIGATIONS

Nombre	Don Rodrigo B
License	MC-05-631 - Colombian Flag
Length Overall	32,50 m
Beam	7,20 m
Draft	3,00 m
Type	Offshore Geotechnical Drilling
Engines	Two (2) 12 V 71
Power	800 Hp
Electric Generators	Two (2) 4 - 71 (40 kw)
Deck Capacity	80 Ton
Deck Area	78 m <sup>2</sup>
Fuel Capacity	20.000 gls
Water Capacity	30.000 gls
Fuel/day	816 gal
Autonomy	60 Days
Cabin capacity	20 People
Crane Capacity	10 Ton
Drilling Rig	8.5 m - Heave Compensated
Drilling Depth	400 m HQ
In-situ Testing Lab Tests	SPT, CPTu, DMT, PMT, Cal. Mod. Clasif, Unconf Comp, Consol, Direct Shear



### EDIFICA USA LLC

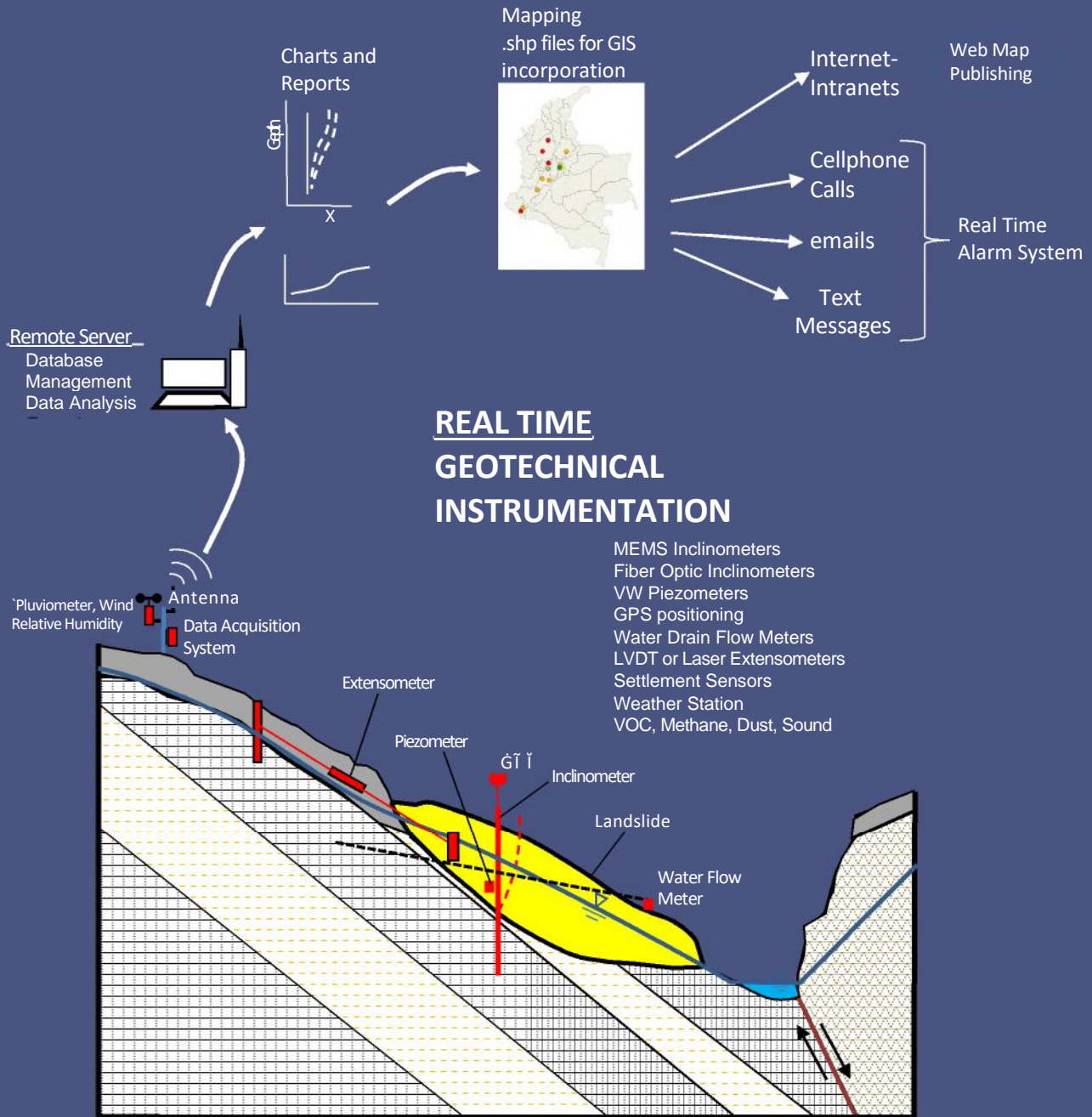
10 Tumbleweed St  
 Rancho Santa Margarita, CA 92679  
 ph: 909 3428301  
 alt: 909 3428300

### EDIFICA COLOMBIA LTDA,

Carrera 49A No. 94-76 Of. 602, Bogota  
 ph: 57 15086013, 57 12362121  
[info@edificausa.com](mailto:info@edificausa.com)



EDIFICA USA LLC, Los Angeles, CA  
 EDIFICA COLOMBIA LTDA, Bogota, Colombia



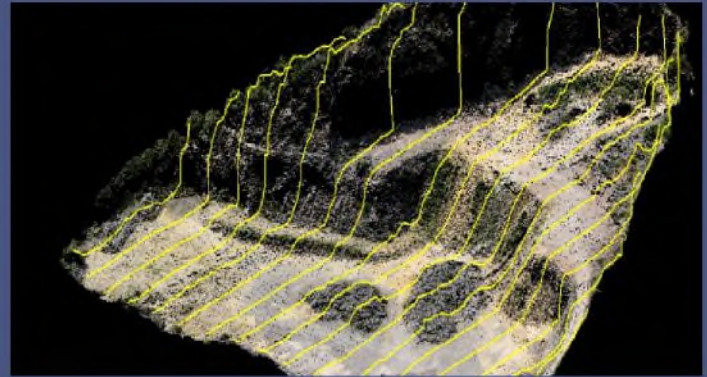
EDIFICA USA LLC  
 10 Tumbleweed St  
 Rancho Santa Margarita, CA 92679  
 ph: 909 3428301  
 alt: 909 3428300

EDIFICA COLOMBIA LTDA,  
 Carrera 49A No. 94-76 Of. 602, Bogota  
 ph: 57 15086013, 57 12362121  
[info@edificausa.com](mailto:info@edificausa.com)



EDIFICA USA LLC, Los Angeles, CA  
EDIFICA COLOMBIA LTDA, Bogota, Colombia

LIDAR TECHNOLOGY FOR AERIAL  
MAPPING AND 3D RENDERING.  
AERIAL INSPECTION WITH REMOTE  
CONTROL UAV'S. PHOTOGRAMMETRIC  
RESTITUTION.



EDIFICA USA LLC  
10 Tumbleweed St  
Rancho Santa Margarita, CA 92679  
ph: 909 3428301  
alt: 909 3428300

EDIFICA COLOMBIA LTDA,  
Carrera 49A No. 94-76 Of. 602, Bogota  
ph: 57 15086013, 57 12362121  
[info@edificausa.com](mailto:info@edificausa.com)



EDIFICA USA LLC, Los Angeles, CA  
 EDIFICA COLOMBIA LTDA, Bogota, Colombia

## EDIFICA PROJECTS

### Mooring Buoys CONTECAR

**Description:**

Civil Engineering Consulting for complete design of mooring buoys in CONTECAR - Cartagena - Colombia.

**Scope:**

Geology,

Bathymetry.

Wave analysis.

Offshore geotechnical investigation.

Geotechnical and structural design.

**Year: 2016**



### Mooring Buoys SPRC

**Description:**

Civil Engineering Consulting for complete design of mooring buoys for the Cruise Terminal Pier 3 Cartagena in Cartagena - Colombia.

**Scope:**

Geology,

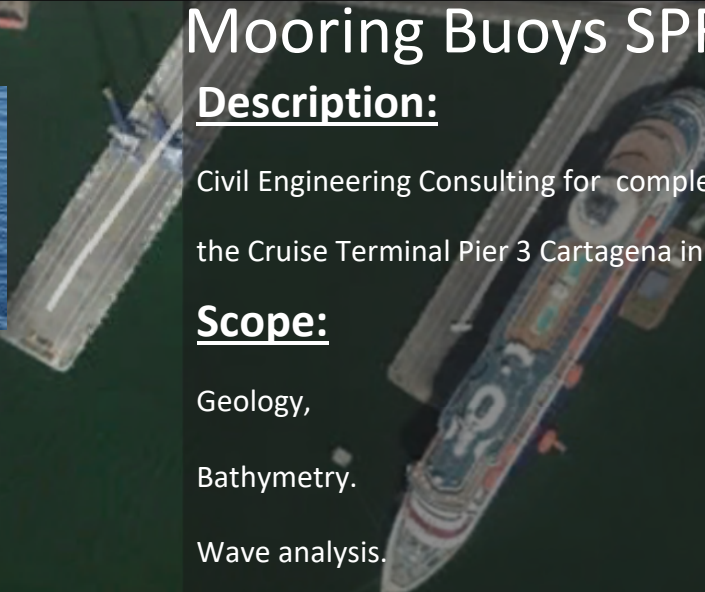
Bathymetry.

Wave analysis.

Offshore geotechnical investigation.

Geotechnical and structural design.

**Year: 2016**



PUERTO DE CARTAGENA





EDIFICA USA LLC, Los Angeles, CA  
 EDIFICA COLOMBIA LTDA, Bogota, Colombia

## SPIA Aguadulce Port.

### Description:

Port of Aguadulce. General Cargo and Container facilities.

### Scope:

Infrastructure planning.

Foundation design.

Geotechnical recommendations.

### Year: 2013



BUENAVENTURA

## Puerto Solo Project.

### Description:

Energy, Petroleum and Cargo Port.

### Scope:

LNG, LPG, petroleum and derived products storage and transfer, power plant, containers, general cargo.

Infrastructure planning and Layout.

Foundation preliminary design.

Geotechnical, structural and environmental consulting recommendations.

### Year: 2016



BUENAVENTURA



EDIFICA USA LLC, Los Angeles, CA  
 EDIFICA COLOMBIA LTDA, Bogota, Colombia

## Puerto Antioquia Project.

### Description:

Container and General Cargo Port.  
 8 Km viaduct, 600 m x 250 m offshore platform and onshore installations.

### Scope:

Infrastructure Planning.  
 Specialized geotechnical In situ test  
 Foundation preliminary design.  
 Structural preliminary design.  
 Aerial survey.  
 EPC Contractor Selection Support.

Year: 2016-2019



TURBO

## Puerto Nuevo Project.

### Description:

Geotechnical and Geological survey for the final structural design and construction of Puerto Nuevo port.

### Scope:

Foundation design.  
 Geotechnical recommendations.  
 Infrastructure planning.

Year: 2011



SANTA MARTA



EDIFICA USA LLC, Los Angeles, CA  
 EDIFICA COLOMBIA LTDA, Bogota, Colombia

## El Cayao Port. LNG.

### Description:

Geotechnical and Geological survey for the final structural design and construction.

### Scope:

Foundation design.

Geotechnical recommendations.

Year: 2014



CARTAGENA

## Waste water treatment plant - Canoas.

### Description:

Geotechnical and Geological survey for the final structural design and construction for the projected wastewater treatment plant in Bogotá river

### Scope:

Preliminary Foundation design.

Geotechnical recommendations

Year: 2013



SOACHA



EDIFICA USA LLC, Los Angeles, CA  
 EDIFICA COLOMBIA LTDA, Bogota, Colombia



## SPLA Santa Marta.

### Description:

Liquids port terminal. 800 m long structure and 3 platforms.

### Scope:

Port Planning.

Geotechnical recommendations.

Foundation design.

Aerial and Bathymetric Survey

Year: 2017-2018



SANTA MARTA

## Wind farm Guajira I.

### Description:

Geotechnical and Geological survey for the final structural design and construction of a wind farm of 8 km large, 1 substation, 16 aerogenerators, and an adjacent road.

### Scope:

Foundation design.

Geotechnical recommendations.

Infrastructure planning.

Aerial survey

Year: 2019



URIBIA



EDIFICA USA LLC, Los Angeles, CA

EDIFICA COLOMBIA LTDA, Bogota, Colombia



## Ethylene plant II.

### Description:

Compaction Grouting Rehabilitation Project.

Barrancabermeja Refinery. Ethylene Plant.

### Scope:

Supervision of rehabilitation works.

Design solutions.

Instrumentation.

Year: 2019



BARRANCABERMEJA



## CONTECAR

### Description:

Civil Engineering Consulting for various port structures.

### Scope:

Soil improvement design.

Structural Design.

FEM analysis

Foundation design.

Geotechnical recommendations.

Infrastructure planning.

Year: 2019



CARTAGENA



EDIFICA USA LLC, Los Angeles, CA  
 EDIFICA COLOMBIA LTDA, Bogota, Colombia



# Puerto de Cartagena Project.

## Description:

Civil Engineering Consulting for various port structures.

## Scope:

Soil improvement design.

Structural Design.

FEM analysis

Foundation design.

Geotechnical recommendations.

Infrastructure planning.

Year: 2010-2019



CARTAGENA



# LEAP Project.

## Description:

Geotechnical and Geological survey for the final structural design and of a paper milling plant.

## Scope:

Foundation design.

Geotechnical recommendations.

Infrastructure planning.

Specialized geotechnical In situ testing.

Year: 2019



YUMBO